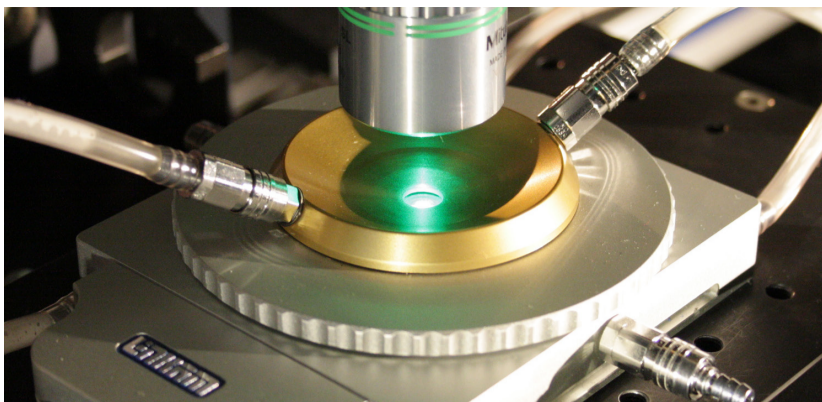
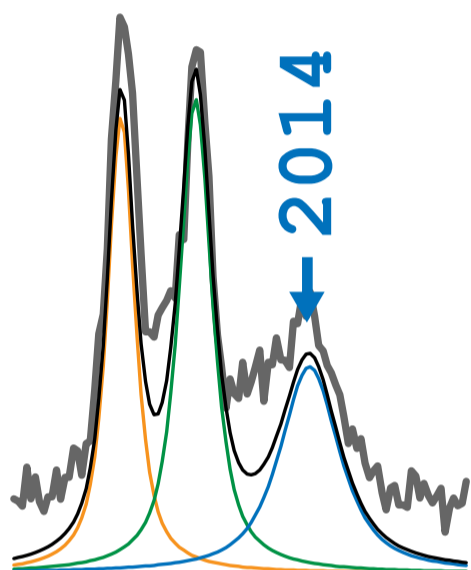
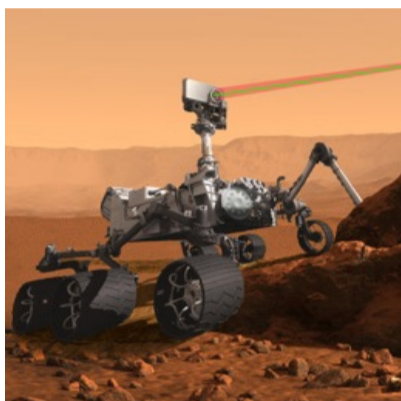


Une école  
thématique  
du CNRS  
2014

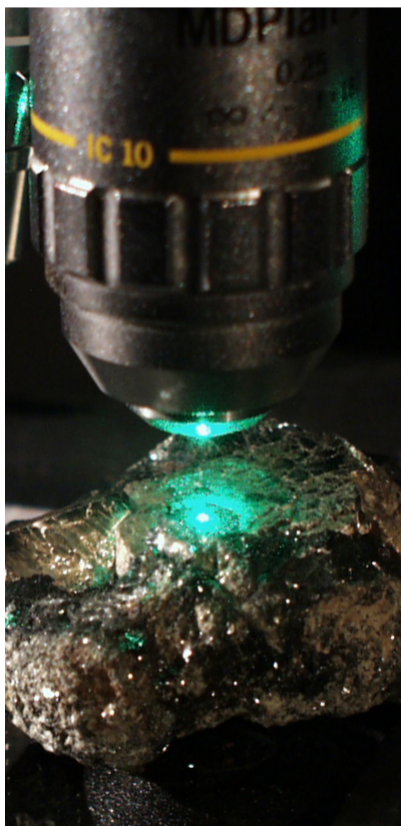
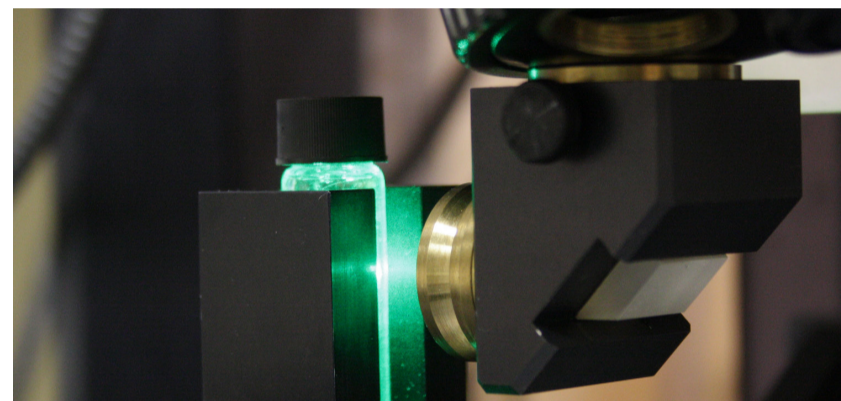


# École de spectroscopie Raman

Théorie, modélisation, pratique et applications.



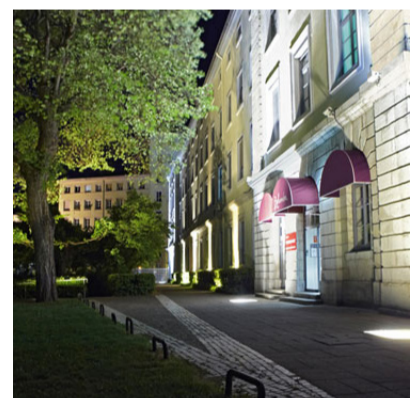
```
#-----  
$WURM = Ecole("Raman");
```



```
*****  
#COMPUTES the INTENSITY of each  
#  
sub intensity  
{  
  open LOG,">>raman_script.log";  
  $hbar_over_kT=7.63822439E-12/$  
  # print LOG "hbar over kT = ",$  
  for ($ii=1;$ii<$nmodes+1;$ii++)  
    print "\n Mode no. ",$ii,"  
    if (abs($fregs[$ii])>$visibl  
  
  $dw=29979245800*($laser-$fi  
  $dw4=$dw*$dw*$dw*$dw;  
  $fregsHz=$fregs[$ii]*29979  
  $bose=1/(1-exp(-$hbar_over  
  $pref=$dw4*$bose/(30*$freg  
  $n($ii)=(($aman*$freg)/$ii
```



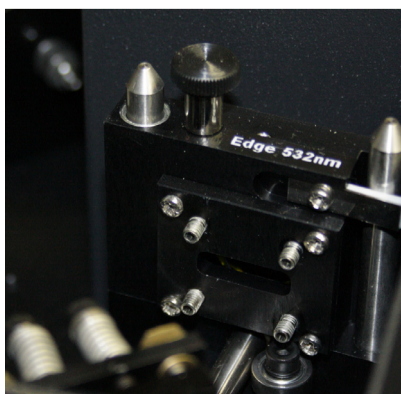
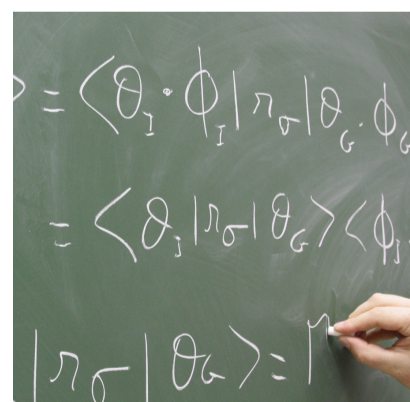
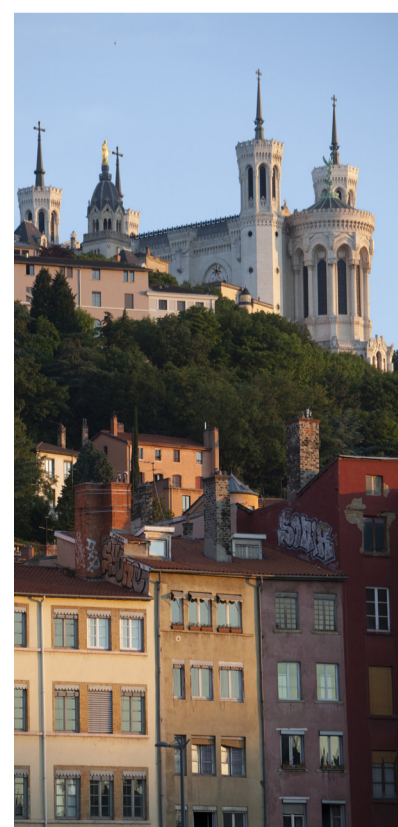
**Lyon**  
Résidence Villemanzy  
du 3 au 7 novembre 2014



Inscriptions jusqu'au 5 octobre 2014



[raman-wurm2014.sciencesconf.org](http://raman-wurm2014.sciencesconf.org)  
contact : [raman@geologie-lyon.fr](mailto:raman@geologie-lyon.fr)



organisé par  
 **Laboratoire  
de géologie de Lyon**  
**the WURM project**  
  
avec le soutien de  
**HORIBA**  
Scientific